

SECTIONAL TERMINAL BLOCKS

DIN (EURO-STYLE) SECTIONAL TERMINAL BLOCKS

ELECTRICAL:

Insulating material:

- Nylon- 6/6, grey
- UL 94V-2 flammability rating
- 100° C / 212° F continuous, 170° C / 338° F intermittent & short exposure

Connector - copper, nickel plated

Screws - steel, zinc plated

Integrated pressure plate to avoid wire damage

For identification labels - see page 42

STANDARDS:

UL recognized file no. XCFR2.E62806

CSA certified file no. LR700930

VDE

CE compliant

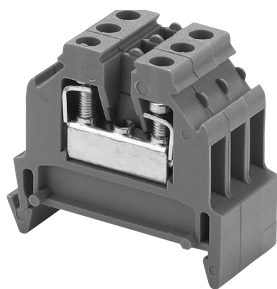
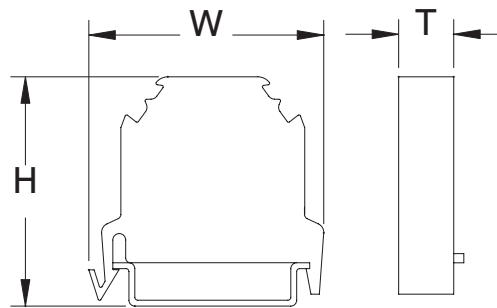
RoHS compliant

CATALOG #	WIRE RANGE	AMPS			VOLTS	DIMENSIONS (MM)			TERMINALS PER FOOT	TERMINAL TORQUE	DESCRIPTION
		UL	CSA	VDE		T	W	H			
MIK3	#12-#22 AWG	20	25	26	600	5	42	36	60	5	Terminal
MIK5	#10-#22 AWG	30	25	24	600	6	42	38	50	9 - 13.3	Terminal
MIK10	#8-#22 AWG	50	50	61	600	8	42	44	38	9.8	Terminal
MIK16	#6-#22 AWG	65	68	82	600	10	42	44	30	18	Terminal
MIK25	#4-#8 AWG	85	70	108	600	12	50	48	25	27	Terminal
MIKTS4	#12-#22 AWG	20	20	16	300	6	42	53	50	-	Disconnect
MIKSI5	#10-#20 AWG	10	-	6	300	8	60	47	38	-	Fused Terminal ¹
MIKE4	#10-#22 AWG	-	-	-	-	7	56	38	-	8.0	Grounding Lug ²
MIKE10	#8 AWG	-	-	-	-	8	56	44	-	13.3	Grounding Lug ²
MIKE16	#6 AWG	-	-	-	-	10	56	44	-	18	Grounding Lug ²

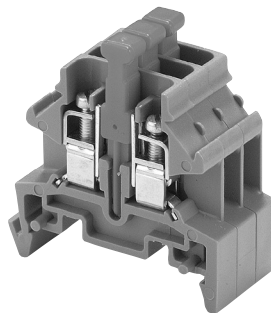
¹ UL File No. E35113, For Fuse Type - 5x20 or 5x25 mm

² Grounding Lugs are Green/Yellow Nylon

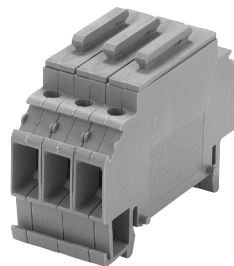
Dimensions:
H = Height
W = Width
T = Thickness



Terminal
(MIK5)



Disconnect Terminal
(MIKTS4)



Fused Terminal
(MIKSI5)



Grounding Lug
(MIKE10)

SECTIONAL TERMINAL BLOCKS

DIN (EURO-STYLE) SECTIONAL TERMINAL BLOCKS HARDWARE

Insulating end sections - cover the last terminal of an assembly

Insulating partitions - for visual and electrical separation of terminals grouped on DIN rail

2-position jumpers - connect two adjacent terminals (middle portion snaps off to assemble)

12-position jumpers - connect up to 12 adjacent terminals (middle portion snaps off to assemble); jumper can be easily cut to length to connect smaller assemblies

Connecting strap - for linking two adjacent 12-pole jumpers

Safety cover - cover with warning label for line terminals which cannot be disconnected

End brackets - anchor on both ends of terminal assemblies to hold the assembly in place

DIN rail - standard 35 x 7.5 mm DIN rail, cut in 2 meter lengths with slots for mounting (steel, zinc plated)

	MIK3	MIK5	MIK10	MIK16	MIK25	MIKTS4	MIKS15
Insulating End Sections	MIW2	MIW4	MIW16	MIW16	MIW50	MIW4	-
Insulating Partitions	MIW4	MIW16	MIW50	MIW50	MIW70	-	MIW50
2-Position Jumper	MVB2-2	MVB4-2	MVB6-2	MVB16-2	MVB25	-	-
12-Position Jumper	MVB2-12	MVB4-12	MVB6-12	MVB16-12	-	-	-
Connecting Strap	MVL2-2	MVL4-2	MVL6-2	MVL16-2	MVL25	-	-
Safety Cover	MKAW2	MKAW2	MKAW10	MKAW16	MKAW25	-	-
End Bracket/Anchor ¹	MSK35	MSK35	MSK35	MSK35	MSK35	MSK35	MSK35
DIN Rail	MN35-2	MN35-2	MN35-2	MN35-2	MN35-2	MN35-2	MN35-2

¹MSK35 - End Bracket Securing Torque 7-9 lb-in (.8-1 N-m)

UNIVERSAL IDENTIFICATION LABELS TYPE MSH SPECIFICATIONS:

Available plain, with numbers, letters or symbols

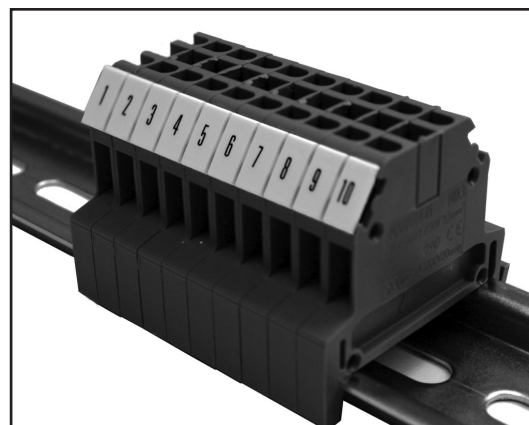
Can be labeled vertically or horizontally

Single label MSH 5 can be used for all sizes

MSH5 & MSH6 are sold in ten strips of ten

MSH8 & MSH10 are sold in ten strips of five

RoHS compliant



ORDERING CODE:

